

TTP-50



.50 CAL TARGET TRAINING PISTOL

USER MANUAL

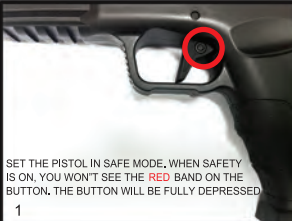
⚠ WARNING!

READ AND FOLLOW THIS MANUAL BEFORE USING. RUBBER ROUND LAUNCHERS ARE NOT TOYS.

CONSIDERING THAT A LAUNCHER USES A SIMILAR FIRING METHOD, A LAUNCHER CAN INTERCHANGE WITH OTHER TYPES OF AMMUNITION THAT HAVE THE SAME [.50] CALIBER SIZE, SUCH AS PAINTBALL, WATER BALLS AND PEPPER BALLS.

FOR THE SAKE OF CLARIFICATION, THIS MANUAL WILL BE USING THE FOLLOWING TERMINOLOGY: WHEN THE PISTOL IS LOADED WITH AMMUNITION (PEPPER ROUNDS OR RUBBER BALLS), IT WILL BE DEFERRED AS A LAUNCHER. WHEN THE PISTOL IS LOADED WITH OTHER TYPES OF ROUNDS, A MARKER.

Co2 CARTRIDGE INSTALLATION (12g)



SET THE PISTOL IN SAFE MODE. WHEN SAFETY IS ON, YOU WON'T SEE THE RED BAND ON THE BUTTON. THE BUTTON WILL BE FULLY DEPRESSED.

1



INSERT THE CO2 CARTRIDGE UPSIDE DOWN SAME AS THIS PHOTO

3

WE OFFERS A LIMITED WARRANTY ON ALL SHOOTING PRODUCTS SOLD BY OUR AUTHORIZED DEALERS. THIS LIMITED WARRANTY COVERS DEFECTS IN MATERIAL AND/OR WORKMANSHIP FOR A PERIOD OF 30 DAYS FROM THE DATE OF PURCHASE. PROOF OF PURCHASE MUST ACCOMPANY ANY WARRANTY CLAIM.

MAKE SURE YOUR PURCHASE WAS MADE FROM AN AUTHORIZED DEALER:

BEFORE PRESSURIZING

IF USING AS A MARKER, CHECK TO MAKE SURE THAT YOU AND ANYONE WITHIN RANGE ARE WEARING EYE PROTECTION DESIGNED SPECIFICALLY FOR TARGET SHOOTING.

DOUBLE CHECK THAT ALL SCREWS ARE TIGHTENED AND NO PARTS ARE LOOSE BEFORE INSTALLING CO2 CARTRIDGE

MAKE SURE YOU ARE NOT SHOOTING AT HUMAN OR ANIMALS IF USING AS A MARKER

NOTE: REMEMBER CO2 CARTRIDGE CAN BE EXTREMELY DANGEROUS IF MISUSED OR IMPROPERLY HANDLED. USE ONLY CYLINDERS MEETING D.O.T. TO OR REGIONALLY DEFEND SPECIFICATIONS. DO NOT PERFORM ANY WORK ON THE CO2 CARTRIDGE



BELOW THE PISTOL GRIP TURN THE CO2 PUNCTURING CAP COUNTER CLOCKWISE TO REMOVE THE CAP

2



PLACE THE CO2 PUNCTURING CAP BACK TO THE PISTOL. TURN CLOCKWISE UNTIL THE CAP IS COMPLETELY SEAL

4

SAFE HANDLING

A LAUNCHER IS NOT A LETHAL WEAPON. PEPPER ROUNDS AND PEPPER SPRAYS ARE MADE FROM CHEMICAL THAT CAN IRRITATE THE EYES, MOUTH AND NOSE UPON CONTACT. HOWEVER, IF SHOT CONTINUOUSLY, THEY CAN MAKE IT QUITE DIFFICULT TO BREATHE.

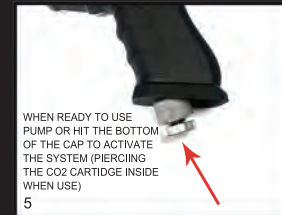
WARNING: NEVER CARRY YOUR MARKER / LAUNCHER UNCAGED WHEN NOT ON A PLAYING FIELD. THE GENERAL PUBLIC AND LAW ENFORCEMENT PERSONNEL MAY NOT BE ABLE TO DISTINGUISH BETWEEN A MARKER / LAUNCHER AND A FIREARM. FOR YOUR OWN SAFETY, ALWAYS CARRY YOUR MARKER / LAUNCHER IN A SUITABLE CASE OR IN THE BOX IN WHICH IT WAS SHIPPED.

⚠ WARNING!

DO NOT UNSCREW THE CO2 PUNCTURING CAP WHILE THE LAUNCHER IS PRESSURIZED! THE 12G CO2 CYLINDER MAY SHOOT OUT BY DOING SO AND MAY CAUSE INJURY. ALWAYS KEEP THE CAP IS SCREWED IN TIGHTLY WHEN THE CO2 CYLINDER IS PRESSURIZED

IMPORTANT: IF THE PISTOL BEGINS TO LEAK GAS, KEEP EXPOSED SKIN AWAY FROM ESCAPING GAS TO AVOID INJURY

IN CASE YOU NEED TO RELEASE THE PRESSURIZED GAS, DRY FIRE THE PISTOL FOR 20 ~ 30 SHOTS, THEN PRESS DOWN BOTTOM OF THE CAP BY FORCE TO RELEASE THE INTERNAL PRESSURE



WHEN READY TO USE PUMP OR HIT THE BOTTOM OF THE CAP TO ACTIVATE THE SYSTEM (PIERCING THE CO2 CARTRIDGE INSIDE WHEN USE)

5

- READ AND UNDERSTAND THIS ENTIRE MANUAL BEFORE LOADING. ATTACHING A PROPELLANT SOURCE, OR IN ANY WAY ATTEMPTING TO OPERATE
- TREAT EVERY MARKER / LAUNCHER AS IF IT WERE LOADED
- NEVER LOOK DOWN THE BARREL
- KEEP IN SAFE MODE UNTIL READY TO SHOOT
- KEEP YOUR FINGER OFF THE TRIGGER UNTIL READY TO SHOOT
- NEVER AIM AT ANYTHING YOU DO NOT INTEND TO SHOOT
- ALWAYS REMOVE ROUNDS AND THE AIR SOURCE BEFORE DISASSEMBLY.
- AFTER REMOVING THE AIR SOURCE, POINT BARREL IN SAFE DIRECTION AND DISCHARGE UNTIL DEGASSED.
- FOLLOW WARNINGS LISTED ON THE AIR SOURCE FOR HANDLING AND STORAGE
- DO NOT INSTALL COMPRESSED AIR OR LOAD YOUR PROJECTILES UNTIL YOU FEEL COMPLETELY CONFIDENT WITH YOUR ABILITY TO OPERATE SAFELY
- KEEP YOUR FINGER OFF THE TRIGGER. POINT THE MUZZLE OF THE MARKER IN A SAFE DIRECTION AT ALL TIMES. KEEP THE MARKER / LAUNCHER DEACTIVATED UNTIL READY TO OPERATE.

⚠ WARNING!

LAUNCHERS / MARKERS ARE NOT TOYS

- MISUSE MAY RESULT IN SERIOUS BODILY INJURY OR DEATH
- PROPER EYE PROTECTION ARE ADVISED TO BE WORN BY THE USER AND ALL PERSONS WITHIN RANGE.
- NOT FOR SALE TO PERSONS UNDER 18 YEARS OF AGE
- MUST BE 18 YEARS OF AGE OR OLDER TO OPERATE OR HANDLE A LAUNCHER AND ACCESSORIES WITHOUT ADULT SUPERVISION
- READ AND UNDERSTAND ALL CAUTIONS, WARNINGS AND OPERATING MANUALS BEFORE USE.
- DO NOT AIM MARKER / LAUNCHER AT EYES OR HEAD OF PEOPLE, OR AT ANIMALS THAT ARE NOT IN STAGE OF ATTACK.

ANY TAMPERING WITH UNIT Voids YOUR WARRANTY. THERE ARE NO CUSTOMER SERVICEABLE PARTS INSIDE THE UNIT. THE USE OF NON-FACTORY AUTHORIZED COMPONENTS WITHIN THIS PRODUCT MAY CAUSE A CRITICAL FAILURE, FIRE OR SHOCK HAZARD.

IF NO EVENT SHALL SELLER BE LIABLE FOR ANY DIRECT INCIDENT OR CONSEQUENTIAL DAMAGES OR ANY NATURE, OR LOSSES OR EXPENSES RESULTING FROM ANY DEFECT PRODUCT OR THE USE OF ANY PRODUCT.

⚠ CALIFORNIA PROP 65 WARNING

THIS PRODUCT MAY EXPOSE YOU TO CHEMICALS KNOWN TO THE STATE OF CALIFORNIA TO CAUSE CANCER AND BIRTH EFFECTS OR OTHER REPRODUCTIVE HARM.

FOR MORE INFORMATION GO TO WWW.P65WARNINGS.CA.GOV

(CALIFORNIA LAW REQUIRES THIS WARNING TO BE GIVEN TO CUSTOMERS IN THE STATE OF CALIFORNIA)

LOADING THE MAGAZINE



SET THE PISTOL IN SAFE MODE, WHEN SAFETY IS ON, THE BUTTON WILL BE FULLY DEPRESSED, WHEN SAFETY IS OFF, A RED BAND WILL COME UP

1



TAKE THE MAGAZINE OUT FROM THE FRONT OF THE PISTOL BY CLIPPING DOWN THE TIP OF THE MAGAZINE USING YOUR FINGERS, THEN PULL THE MAGAZINE OUT

3



INSERT THE PROJECTILES ONE ROUND AT A TIME, THE MAGAZINE HOLDS SIX ROUNDS OF 0.50 CALIBER ROUNDS, ROUNDS ARE SPRING LOADED AND LOCKED IN PLACE TO PREVENT EXISTING THE MAGAZINE



GENTLY SLIDE THE MAGAZINE BACK INTO THE PISTOL, MAKING SURE THE MAGAZINE IS FACING THE CORRECT DIRECTION, DO NOT SLAM THE MAGAZINE INTO THE PISTOL

USE CAUTION WHEN INSERTING THE MAGAZINE, A BROKEN PEPPER ROUND COULD MAKE YOU EXPOSE YOURSELF TO CHEMICAL LEAKAGE

FIRING

- ALWAYS KEEP YOUR PISTOL POINTED IN A SAFE DIRECTION
- MAKE SURE THE SAFETY IS ON BEFORE LOADING
- INSERT THE MAGAZINE, FULLY LOADED WITH 6 ROUNDS, THEN PRESSURIZE THE PISTOL.
- AIM THE PISTOL IN A SAFE DIRECTION.
- SET THE SAFETY TO THE OFF POSITION, WHERE RED BAND IS VISIBLE
- AIM THE PISTOL AT THE TARGET, USING THE SIGHTS ON THE TOP TO ASSIST AIMING.
- PLACE YOUR FINGER ON THE TRIGGER AND PULL WITH A SMOOTH SQUEEZING MOTION.
- CLEAR AND UNLOAD WHEN UN-USE

CLEANING

BEFORE PLACING THE PISTOL AWAY IN STORAGE, PREPARE BY CLEANING THOROUGHLY THIS WILL INCREASE THE LIFE OF THE PRODUCT AND ASSURE

OPTIMUM PERFORMANCE FOR FUTURE USE

- 1) BEFORE CLEANING, BE SURE NO ROUNDS REMAIN IN THE PISTOL AND OR MAGAZINE, "DRY FIRE" TO BE CERTAIN THE BREECH IS CLEARED
- 2) UNLOAD THE MAGAZINE, DRY FIRE 20 - 30 ROUNDS FIRST. THEN RELEASE THE GAS BY FULLY PRESSING DOWN THE PIERCING CAP BY PRESSURE AND FORCE, REMAIN AIR WILL BE RELEASED FROM THE VALVE,
- 3) DO NOT USE ANY PETROLEUM BASED OR AEROSOL PRODUCTS / CLEANERS, AS THEY CAN DAMAGE O-RINGS AND PLASTIC COMPONENTS.
- 4) CLEAN THE PISTOL SLIDE BY USING A RAG TO SWAB UNTIL FREE OF RESIDUE. A PAINTBALL-SPECIFIC BARREL SWAB IS VERY USEFUL TO ASSIST IN THIS.
- 5) IF NECESSARY, DISSEMBLE THE PISTOLS BY UNSCREWING THE BODY OF THE PISTOL, CLEAN THE INTERIOR IF NEEDS

NOTE: BE SURE TO DRY THOROUGHLY AS ANY METAL COMPONENTS MAY RUST, A HAIR DRYER ON A LOW SETTING CAN ASSIST IN THE DRYING PROCESS



SPECIFICATIONS

WEIGHT	510G
DIMENSIONS	190 X 142 X 33MM
VELOCITY	320 FPS
EFFECTIVE DISTANCE	20M
PROJECTILE SUPPLY	6-SHOT MAGAZINE
SHOOTING MODE	SINGLE SHOT
POWER	12g Co2 CYLINDER
PROJECTILE DIM	0.50 CALIBER



Alternative Swivel Opening Cap



- 1) Release the strike pin by turning the knob Clockwise
- 2) Place the cap back to the pistol, Turn until the cap is completely seal



When ready to use, turn the knob anti-clockwise to activate the system (Swivel Piercing the Co2 cartridge inside)



Turn the knob clockwise immediately to release the striker of the cap, Co2 will come out and fill the gun automatically.

